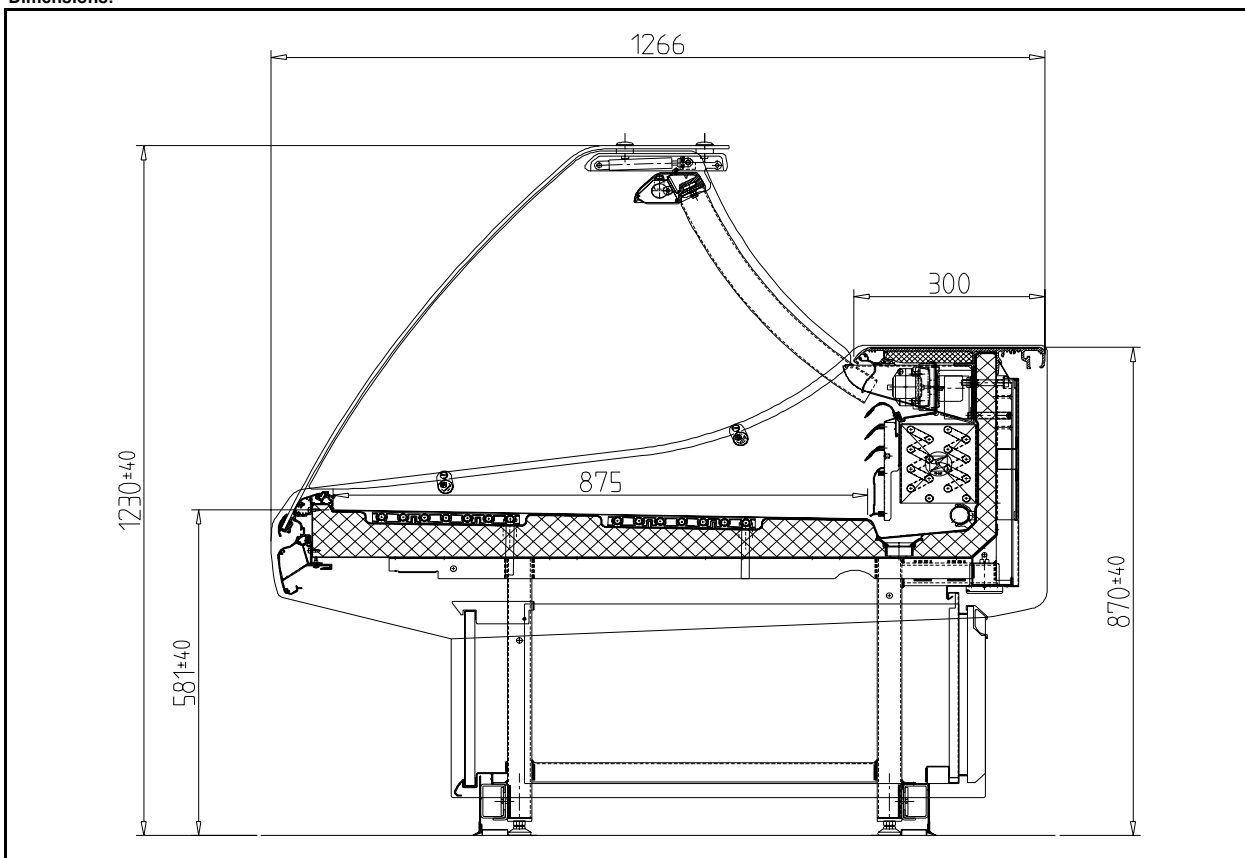
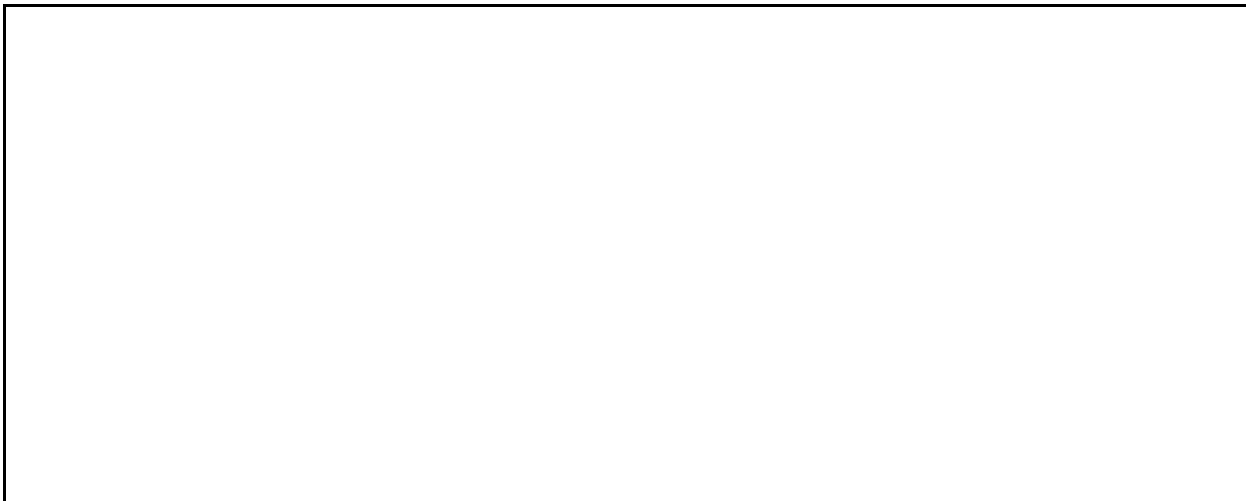


Name	Front height	Number of levels	Basic length	Depth	Top	-
Vision	581mm	1	-	875mm	-	-

Dimensions:



Plan View:



Positions:

C	Case leg
K	Kick plate line
R	Refrigerant lines
W	Drain cabinet, Ø40mm.
E1	Connection pilot terminal box
E2	Connection optional ballast box
E3	Connection optional ballast box (in 3750 basic module)

All dimensions are in mm, basic cabinet module without side walls.
 The distance between store wall and cabinet rear is 50mm.
 The height can be extended by the case legs with max. 40mm.
 Tolerance according to EN441 for basic length are +7/-3mm and general +10/-4mm.

Basic module :

	100	150	200	135° corner	225° corner
L	1000	1500	2000		
D	1260				
H	1230				
C1					
C2					
C3					
C4					
W1					
W2					
R1					
R2					
E1					
E2					

All technical data refer to a standard cabinet equipment.

The cabinet is tested according to EN 441 and is manufactured according the relevant requirements of Machinery directive 98/37/EG Annex II B and Pressure equipment directive 97/23/EG article 3.3

Definitions: Electrical 230 Volt – 50 Hz.
Climate classification 3 (25° C , 60%)
Refrigerant = R404a / R507
Evaporating temperature = -10°

Product temperature M1 (-1 / +5° C)
Charge = 0,25 kg / l.

Dimensions and weights

Basic module	150	200	250	300	350	400	450	500	550	600	650	700	750	800	850	900	
Length+endwalls	1,56	206	2,56	3,06	3,56	4,06	4,56	5,06	5,56	6,06	6,56	7,06	7,56	8,06	8,56	8,06	[M.]
Display area	1,3	1,7	2,1	2,6	3,0	3,4	3,8	4,3	4,7	5,1	5,5	6,0	6,4	6,8	7,2	9,0	[M ²]
Cubic capacity	-	-	-	-	-	-	-	-	-	-	-	-	-	-	-	-	[l]
Gross Weight	260	350	440	525	610	700	790	875	960	1050	1140	1225	1310	1400	1490	1575	[kg]

Thickness End wall = 30 mm

Refrigerant load

Basic module	150	200	250	300	350	400	450	500	550	600	650	700	750	800	850	900	
Q _o	0,56	0,75	0,94	1,13	1,32	1,50	1,69	1,88	2,07	2,25	2,44	2,63	2,82	3,00	3,19	3,38	[kW]

Direct energy consumption

Basic module	150	200	250	300	350	400	450	500	550	600	650	700	750	800	850	900	
Fans	45	60	75	90	105	120	135	150	165	180	195	210	225	240	255	270	[W]
Frame heater 1	30	40	50	60	70	80	90	100	110	120	130	140	150	160	170	180	[W]
Frame heater 2*	30	40	50	60	70	80	90	100	110	120	130	140	150	160	170	180	[W]
Lighting 1	46	80	86	117	142	138	188	213	209	259	259	255	280	276	326	351	[W]
Lighting 2 *	46	80	86	117	142	138	188	213	209	259	259	255	280	276	326	351	[W]
Defrost heater *	675	875	1075	1275	1550	1750	1950	2150	2350	2550	2825	3025	3300	3500	3700	3900	[W]
Nose Fans *	27	36	45	54	63	72	81	90	99	108	117	126	135	144	153	162	[W]
Humidifier *	73	80	88	95	103	110	118	125	133	140	148	155	163	170	178	185	[W]
-																	[kW]
Σ Basic module	0,12	0,18	0,21	0,27	0,32	0,34	0,41	0,46	0,48	0,56	0,58	0,61	0,66	0,68	0,75	0,80	[kW]

Frameheater 1 = Nose / glass

Frameheater 2 = Workbench (optional)

Lighting 1 = Display area

Lighting 2 = front panel / floor (optional)

Components basic module

Cooling	Type	150	200	250	300	350	400	450	500								
Evaporator type	2 x 7 - 1/2" -....- 6	1430	1930	2430	2930	3430	3930	4430	5930								[mm]
Circuit volume	Evaporator & Plate	3,6	4,8	5,9	7,1	8,3	9,5	10,7	11,9								[l]
Pipe size Liquid /suction	Cu / Cu	8 / 10	8 / 10	8 / 10	8 / 10	8 / 10	8 / 10	10 / 12	10 / 12								[mm]
Therm. Expansion valve	TES 2	00	00	01	01	01	02	02	02								[orifice]
Liquid Solenoid valve	EVR	3	3	3	3	3	3	3	3								[size]
Suction Solenoid valve	EVR	3	4	4	6	6	6	6	8								[size]
Electr. Expansion valve*	AKV 10	1	2	2	3	3	3	3	4								[orifice]
Electric	Type	150	200	250	300	350	400	450	500								
Fan motor	U82.600.0	3	4	5	6	7	8	9	10								
Fan blade	72-5	3	4	5	6	7	8	9	10								
Fanspeed control	SCU10-V	1	1	1	1	1	1	1	1								
Controller	Type	Master				Slave *											
Smeva	SCU535	1				2 *											
Sensors 1,2,3,4,5 *	SM811	3				2 x 3 *											

Sensor 1 = air-on Sensor 2 = air-off Sensor 3 = evap.-in Sensor 4 = evap-out Sensor 5 = defrost-term.

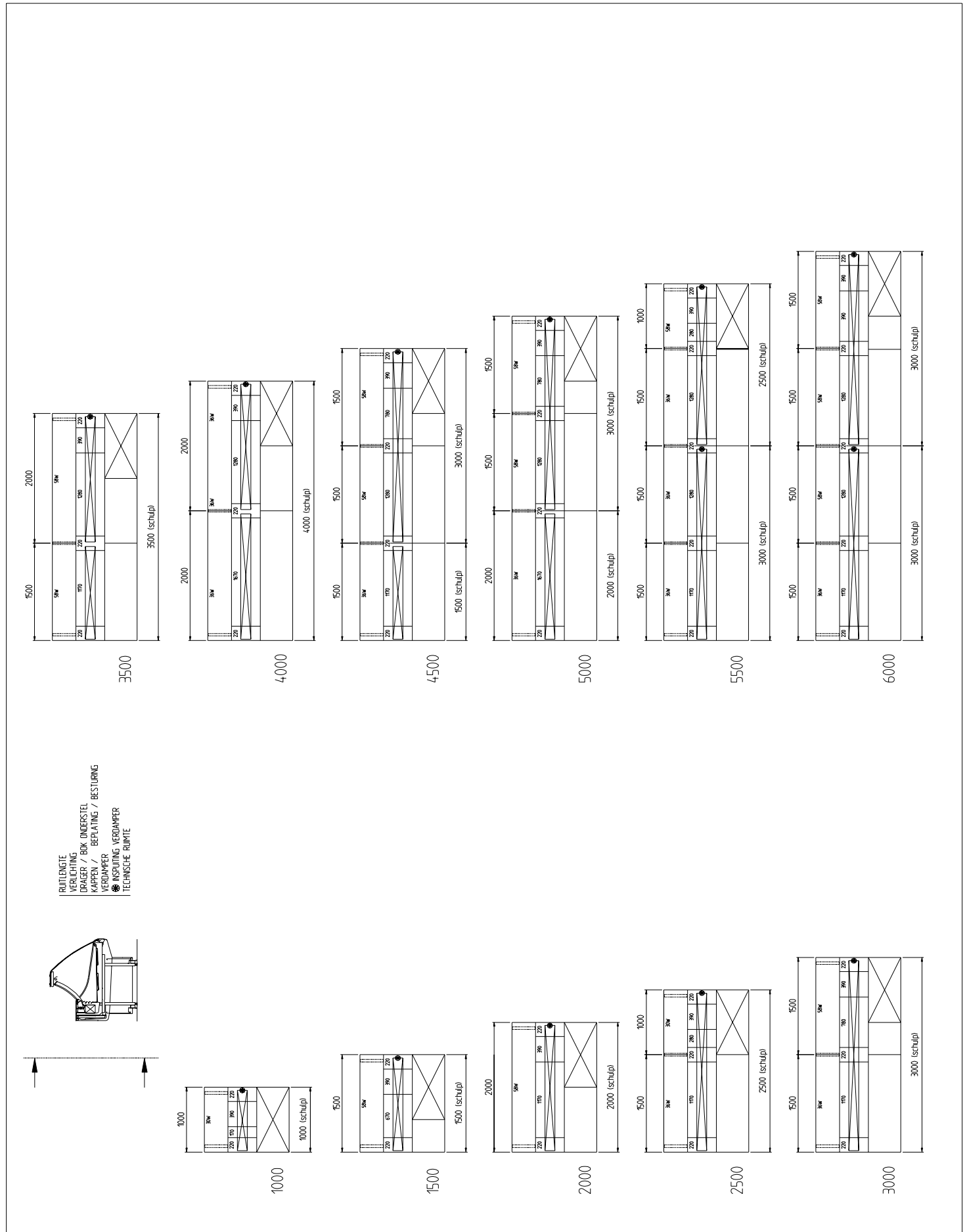
Plug-inn preparations

Basic module	150	200	250	300	350	400	450	500	550	600	650	700	750	800	850	900	
Liquid line	8	8	8	8	8	10	10	10	10	10	10	10	10	10	10	10	[mm]
Liq. Sol.valve	3	3	3	3	3	3	3	3	3	3	3	3	3	3	3	3	[size]
Suction line	10	10	10	10	10	12	12	12	12	12	15	15	15	15	15	15	[mm]
Suct.Sol.valve	3	4	4	6	6	6	6	8	8	10	10	10	10	10	10	10	[size]

Set up data controller

Thermostat			Defrost	Cycle off		Electrical	
Cut in	-2	[°C]	No. Defrost per 24 h	7		-	
Differential	2	[K]	Defrost time	15/30/180	[min]	-	[min]
Control weight S1/S2	50	[%]	Defrost termination	6	[°C]	-	[°C]

*) Options



- RUITLENTE
- VERLICHTING
- DRAGER / BOK ONDERSTEL
- KAPPEN / BEPLATING / BESTURING
- VERDAMPERS
- INSPUITING VERDAMPERS
- TECHNISCHE RUIMTE
- ↔ KOPPELNAAD

